

380 Series Circular Waveguide Flange Set



Description 380 Series Flange Set

Mi-Wave's 380 series circular waveguide flanges have been designed specifically for the TE₀₁ low loss mode circular waveguide components. These flanges are precision-machined to facilitate low loss, low reflection waveguide connections at millimeter wave frequencies. O-ring gaskets are included to make these flanges appropriate for use in pressurized waveguide systems. The 380 series flanges are self-aligning male/female connectors and are available in both standard and custom size waveguide.

Features

- Self-Aligning Connectors
- Supplied in Male and Female Pairs

Ordering Information

380

Specify Waveguide
Inside Diameter
(See Appendix L)

Example: **Mi-Wave's** model number 380-688 is a circular waveguide flange with an inside waveguide diameter of 0.688 inches.

Please Note: Due to the non-standardization of this product line, we recommend that you contact **Mi-Wave** for more specific information about your requirements.

Mi-Wave

Millimeter Wave Products Inc.

www.miwv.com

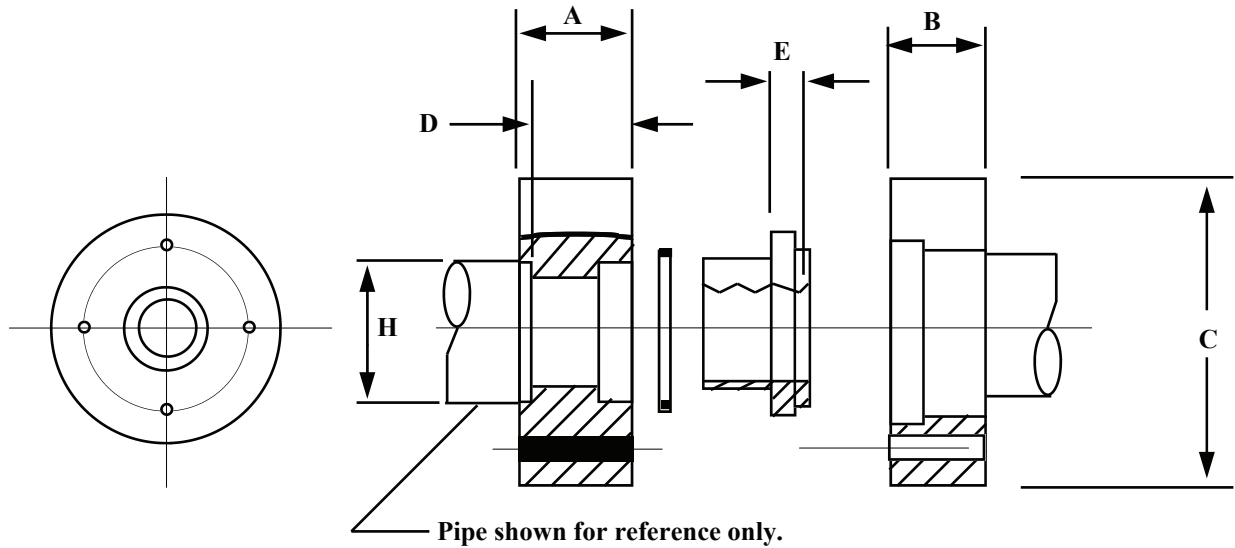
2200 Tall Pines Drive, Suite 100

Largo, FL 33771

Tel. (727) 536-0033 Fax. (727) 536-0012

E: sales@miwv.com

380 Series Circular Waveguide Flange Set



Dimensional Specifications

Model No.	A		B		C		D		E		H	
	in	mm	in	mm	in	mm	in	mm	in	mm	in	mm
380-688	0.55	13.97	0.30	7.62	1.95	49.53	.450	11.43	.185	4.70	.788	20.02
380-635	0.55	13.97	0.30	7.62	1.95	49.53	.450	11.43	.185	4.70	.750	19.05
380-545	0.55	13.97	0.30	7.62	1.95	49.53	.450	11.43	.185	4.70	.625	15.88
380-495	0.55	13.97	0.30	7.62	1.95	49.53	.450	11.43	.185	4.70	.625	15.88
380-353	0.40	10.16	0.27	6.86	1.20	30.48	.300	7.62	.141	3.58	.437	11.10
380-291	0.40	10.16	0.27	6.86	1.20	30.48	.300	7.62	.141	3.58	.375	9.53
380-250	0.40	10.16	0.27	6.86	1.20	30.48	.300	7.62	.141	3.58	.291	7.39

Mi-Wave

Millimeter Wave Products, Inc.

www.miww.com

Tel. (727) 536-0033 Fax. (727) 536-0012

E: sales@miww.com