

355 Series

Rotary Joints



Features

- Negligible Variation During Rotation
- Minimum Effects on Transferred Signals

Description 355 Series Rotary Joints

Mi-Wave's 355 series rotary joints are available in standard circular waveguide sizes from 11.6 to 150 GHz. Each rotary joint consists of two circular waveguide sections mounted on ball bearings. Connections to the guides are made at standard male and female circular flanges. Precise alignment of the waveguide sections prevents spurious mode generation, and the very small gap between abutting surfaces contributes a negligible loss in the TE₀₁ circular mode. In all models, amplitude variation with rotation is less than 0.2 dB and phase variation is less than 2 degrees.

Applications

The 355 series rotary joints provide efficient energy transfer in radar antenna systems or in other applications requiring relative rotation between two sections of waveguide. Designed for low phase variation, low insertion loss, and low wow, they are also useful in special laboratory test set-ups for the measurement of millimeter wave parameters including phase variation in radiated fields. Operating in the low-loss TE₀₁ circular mode, these rotary joints are designed for use in circular waveguide transmission lines.

The 355 series rotary joint can also be fitted with two series 330 mode transitions and a 340 series mode filter to provide a rotary joint assembly for rectangular waveguide applications. Despite the assembly's size, it is a useful design at frequencies that are too high for conventional rotary joints. For use in rectangular waveguide systems, they must be adapted with **Mi-Wave's** Series 330 mode transitions.

Ordering Information

355 - XXX

Three Digit of Waveguide Inside Diameter (See Appendix L)

For Example: **Mi-Wave's** model number 355-250 is a rotary joint for a frequency range of 69.7 to 95.9 GHz with an inside pipe diameter of 0.250

Please Note: Due to non-standardization of this product line, we recommend that you contact **Mi-Wave** for more specific information about your requirements.

Mi-Wave

Millimeter Wave Products Inc.

www.miwv.com

2200 Tall Pines Drive, Suite 100

Largo, FL 33771

Tel. (727) 536-0033 Fax. (727) 536-0012

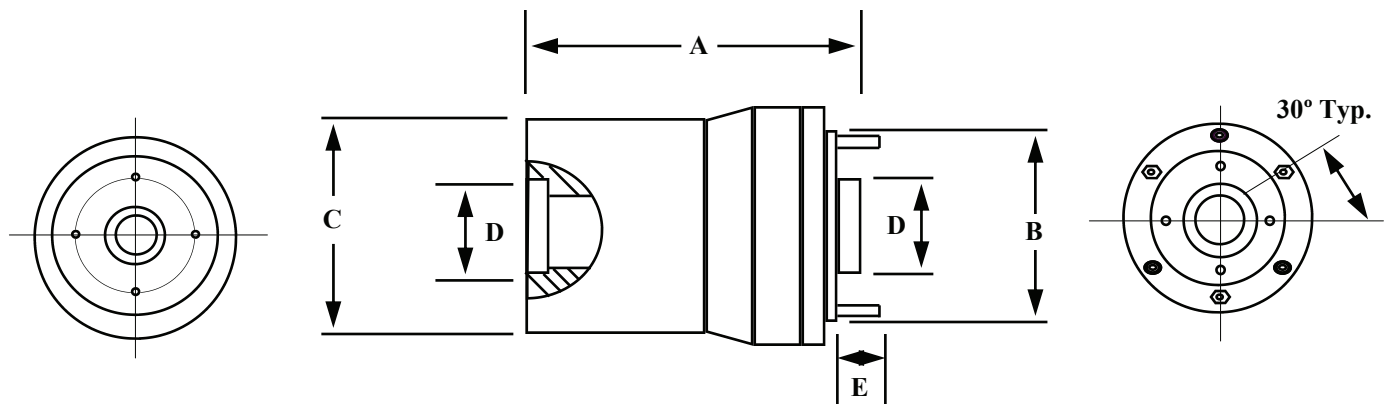
E: sales@miwv.com

355 Series

Rotary Joints

Technical Specifications

Frequency Band (GHz)	11.6-48.0	48.0-96.0	96.0-150.0
Insertion Loss TE₀₁ (dB) Max.	0.3	0.4	0.5
VSWR Min.	1.10	1.10	1.15
Weight (oz)	30	24	15



Dimensional Specifications

Model No.	A		B		C		D		E	
	in	mm	in	mm	in	mm	in	mm	in	mm
355-180	2.35	59.69	1.82	46.23	1.38	35.05	.180	4.57	.211	5.36
355-250	2.35	59.69	1.82	46.23	1.38	35.05	.291	7.39	.211	5.36
355-291	2.35	59.69	1.82	46.23	1.38	35.05	.375	9.53	.211	5.36
355-353	2.35	59.69	1.82	46.23	1.38	35.05	.437	11.10	.211	5.36
355-495	3.35	85.09	3.01	76.45	2.50	63.5	.625	15.88	.264	6.71
355-545	3.35	85.09	3.01	76.45	2.50	63.5	.625	15.88	.264	6.71
355-634	3.35	85.09	3.01	76.45	2.50	63.5	.750	19.05	.264	6.71

Mi-Wave

Millimeter Wave Products, Inc.

www.miwv.com

Tel. (727) 536-0033 Fax. (727) 536-0012

E: sales@miwv.com